

LAGOS WASTE MANAGEMENT SERVICES

STATISTICAL ANALYSIS OF LAND FILL REPORT BY THE VARIOUS AGENCIES FOR

THE MONTH OF APRIL, 2010

	LANDFILL SITES	TRUCK TRIPS	LAWMA			LAWMA CONTRATOR			P S P			M.O.E (HIGH WAY MGR)			L .G.			TOTAL		TOTAL METRIC TONNES OF REFUSE
			DOM	IND	TOTAL	DOM	IND	TOTAL	DOM	IND	TOTAL	DOM	IND	TOTAL	DOM	IND	TOTAL	DOM	IND	
1ST - 7TH APRIL	OLUSOSUN	1,476	8,095		8,095	4,180	2,350	6,530	12,140		12,140	600		600			0	25,015	2,350	27,365
8TH - 14TH		1,594	9,810		9,810	5,070	3,160	8,230	13,700		13,700	420		420			0	29,000	3,160	32,160
15TH - 21ST		1,777	19,020		19,020	5,520	3,250	8,770	13,990		13,990	530		530			0	39,060	3,250	42,310
22ND - 28TH		1,833	20,620		20,620	4,870	2,550	7,420	14,680		14,680	510		510	220		220	40,900	2,550	43,450
	SUB.TOTAL	6,680	57,545	0	57,545	19,640	11,310	30,950	54,510	0	54,510	2,060	0	2,060	220	0	220	133,975	11,310	145,285
1ST - 7TH APRIL	SOLOUS II	765	2,060		2,060	330	580	910	8,720		8,720	420	390	810	80		80	11,610	970	12,580
8TH - 14TH		752	2,050		2,050	310	500	810	8,940		8,940	340	360	700	70		70	11,710	860	12,570
15TH - 21ST		749	2,130		2,130	250	580	830	8,800		8,800	350	350	700	80		80	11,610	930	12,540
22ND - 28TH		749	2,120		2,120	290	570	860	8,790		8,790	370	330	700	70		70	11,640	900	12,540
	SUB.TOTAL	3,015	8,360	0	8,360	1,180	2,230	3,410	35,250	0	35,250	1,480	1,430	2,910	300	0	300	46,570	3,660	50,230
1ST - 7TH APRIL	SOLOUS III	618	860		860	1,225		1,225	9,360		9,360	100		100			0	11,545	0	11,545
8TH - 14TH		641	820		820	1,350		1,350	9,825		9,825	80		80			0	12,075	0	12,075
15TH - 21ST		634	415		415		1,555	1,555	9,770		9,770	130		130			0	10,315	1,555	11,870
22ND - 28TH		621	295		295	1,610		1,610	9,800		9,800	110		110	10		10	11,825	0	11,825
	SUB.TOTAL	2,514	2,390	0	2,390	4,185	1,555	5,740	38,755	0	38,755	420	0	420	10	0	10	45,760	1,555	47,315

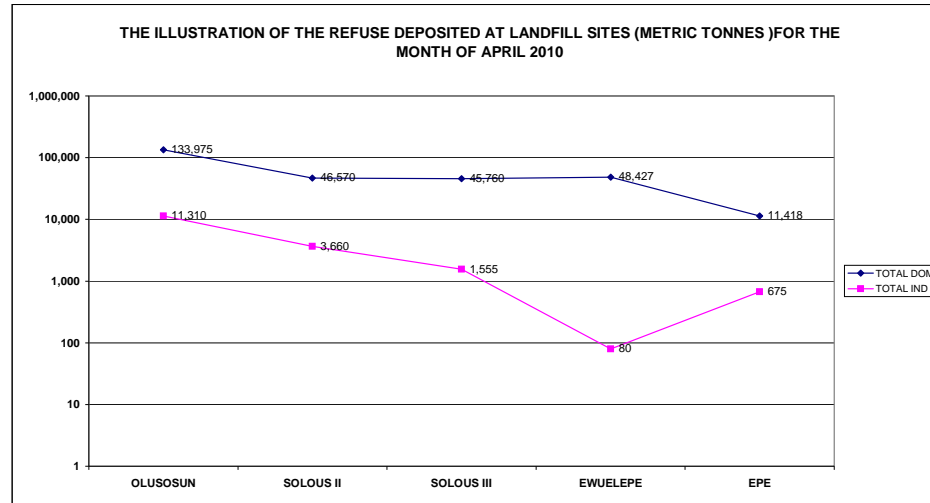
1ST - 7TH APRIL	EWUELEPE	242	16,300		16,300	100		100	2,464		2,464			0			0	18,864	0	18,864
8TH - 14TH		301	17,925		17,925	80	20	100	3,385		3,385			0			0	21,390	20	21,410
15TH - 21ST		177	1,120		1,120	120	20	140	2,465		2,465			0			0	3,705	20	3,725
22ND - 28TH		213	785		785	100	40	140	3,483		3,483			0	100		100	4,468	40	4,508
	SUB.TOTAL	933	36,130	0	36,130	400	80	480	11,797	0	11,797	0	0	0	100	0	100	48,427	80	48,507
1ST - 7TH APRIL	EPE	72	290		290			0	2,200	135	2,335			0			0	2,490	135	2,625
8TH - 14TH		87	255		255			0	2,293	90	2,383			0	228		228	2,775	90	2,865
15TH - 21ST		79	230		230			0	2,898	180	3,078	25		25			0	3,153	180	3,333
22ND - 28TH		92	270		270			0	2,620	270	2,890			0	110		110	3,000	270	3,270
	SUB.TOTAL	330	1,045	0	1,045	0	0	0	10,010	675	10,685	25	0	25	338	0	338	11,418	675	12,093
	TOTAL	13,472	105,470	0	105,470	25,405	15,175	40,580	150,322	675	150,997	3,985	1,430	5,415	968	0	968	286,150	17,280	303,430
	G.TOTAL		105,470			40,580		150,997			5,415			968			303,430			

LAGOS WASTE MANAGEMENT SERVICES

STATISTICAL ANALYSIS OF LAND FILL REPORT BY THE VARIOUS AGENCIES FOR

THE MONTH OF APRIL, 2010

S/N	LANDFILL SITES	TRUCK TRIPS	LAWMA			LAWMA CONTRATOR			P S P			M.O.E (HIGH WAY MGR)			L .G.			TOTAL		TOTAL METRIC TONNES OF REFUSE
			DOM	IND	TOTAL	DOM	IND	TOTAL	DOM	IND	TOTAL	DOM	IND	TOTAL	DOM	IND	TOTAL	DOM	IND	
1	OLUSOSUN	6,680	57,545	0	57,545	19,640	11,310	30,950	54,510	0	54,510	2,060	0	2,060	220	0	220	133,975	11,310	145,285
2	SOLOUS II	3,015	8,360	0	8,360	1,180	2,230	3,410	35,250	0	35,250	1,480	1,430	2,910	300	0	300	46,570	3,660	50,230
3	SOLOUS III	2,514	2,390	0	2,390	4,185	1,555	5,740	38,755	0	38,755	420	0	420	10	0	10	45,760	1,555	47,315
4	EWUELEPE	933	36,130	0	36,130	400	80	480	11,797	0	11,797	0	0	0	100	0	100	48,427	80	48,507
5	EPE	330	1,045	0	1,045	0	0	0	10,010	675	10,685	25	0	25	338	0	338	11,418	675	12,093
	TOTAL	13,472	105,470	0	105,470	25,405	15,175	40,580	150,322	675	150,997	3,985	1,430	5,415	968	0	968	286,150	17,280	303,430
	G.TOTAL		105,470			40,580			150,997			5,415			968			303,430		



LAWMA	105,470.00
LAWMA CONTR	40,580.00
P S P	150,997.00
M.O.E.	5,415.00
L.G.	968.00
	303,430.00

